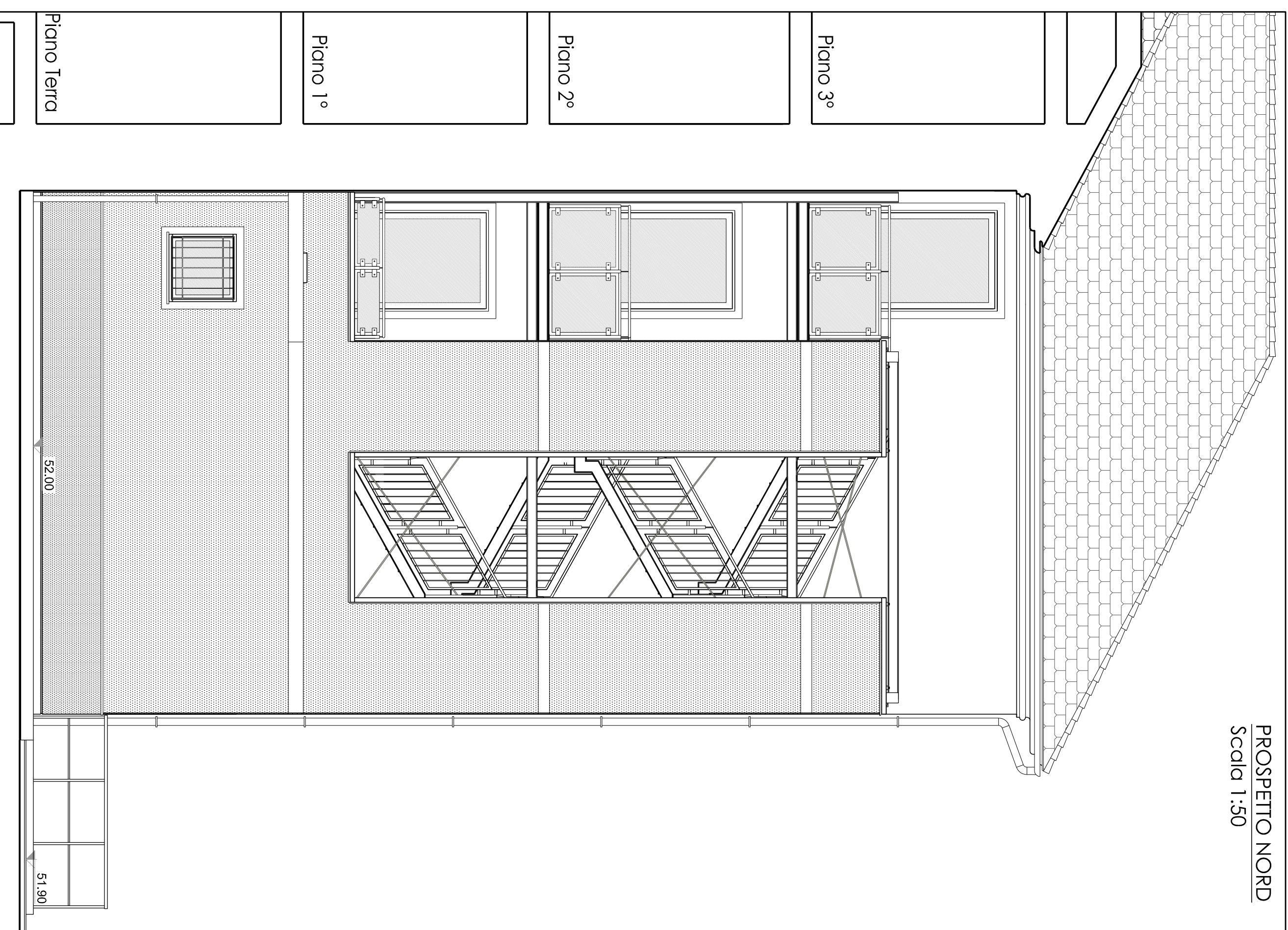
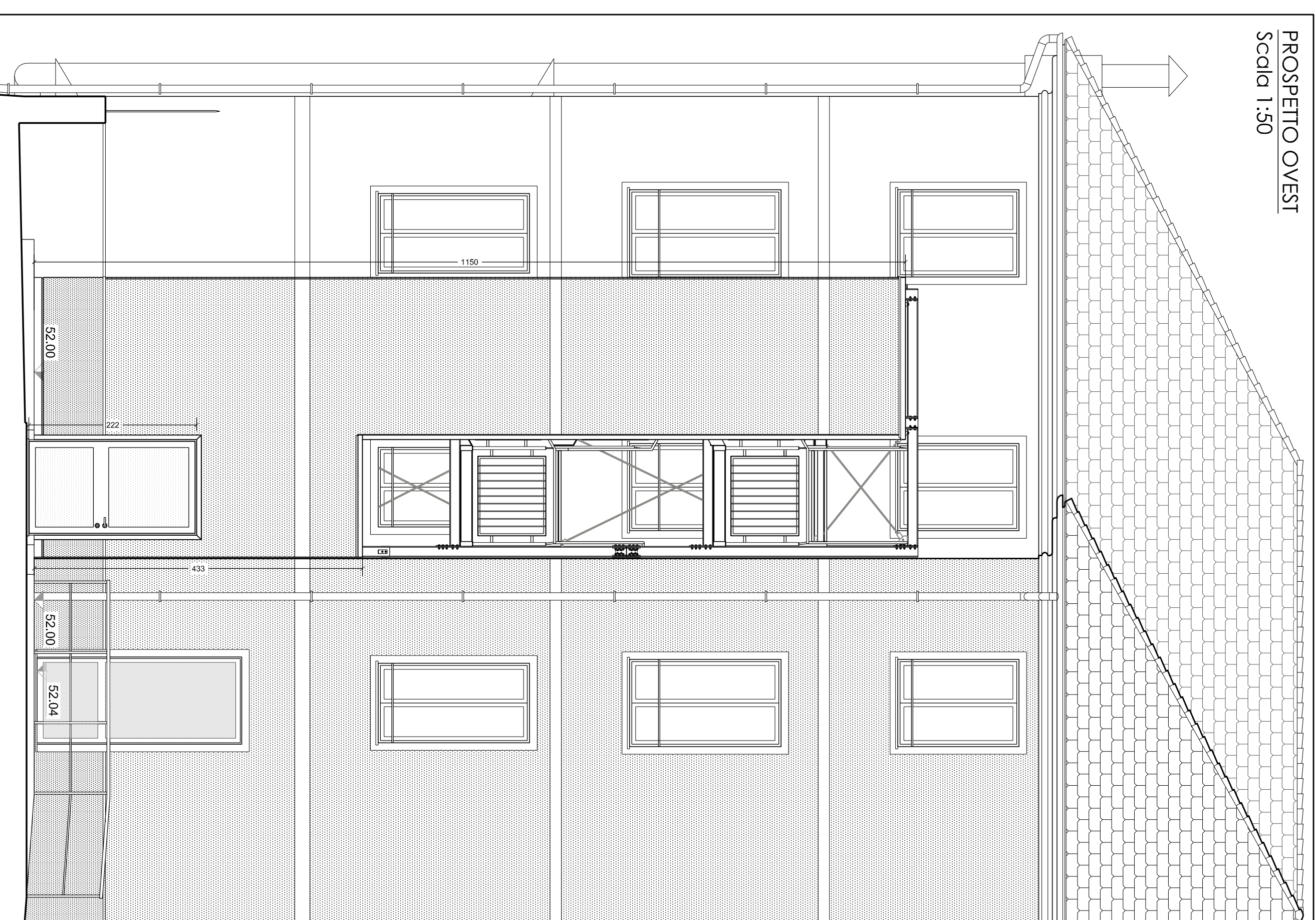


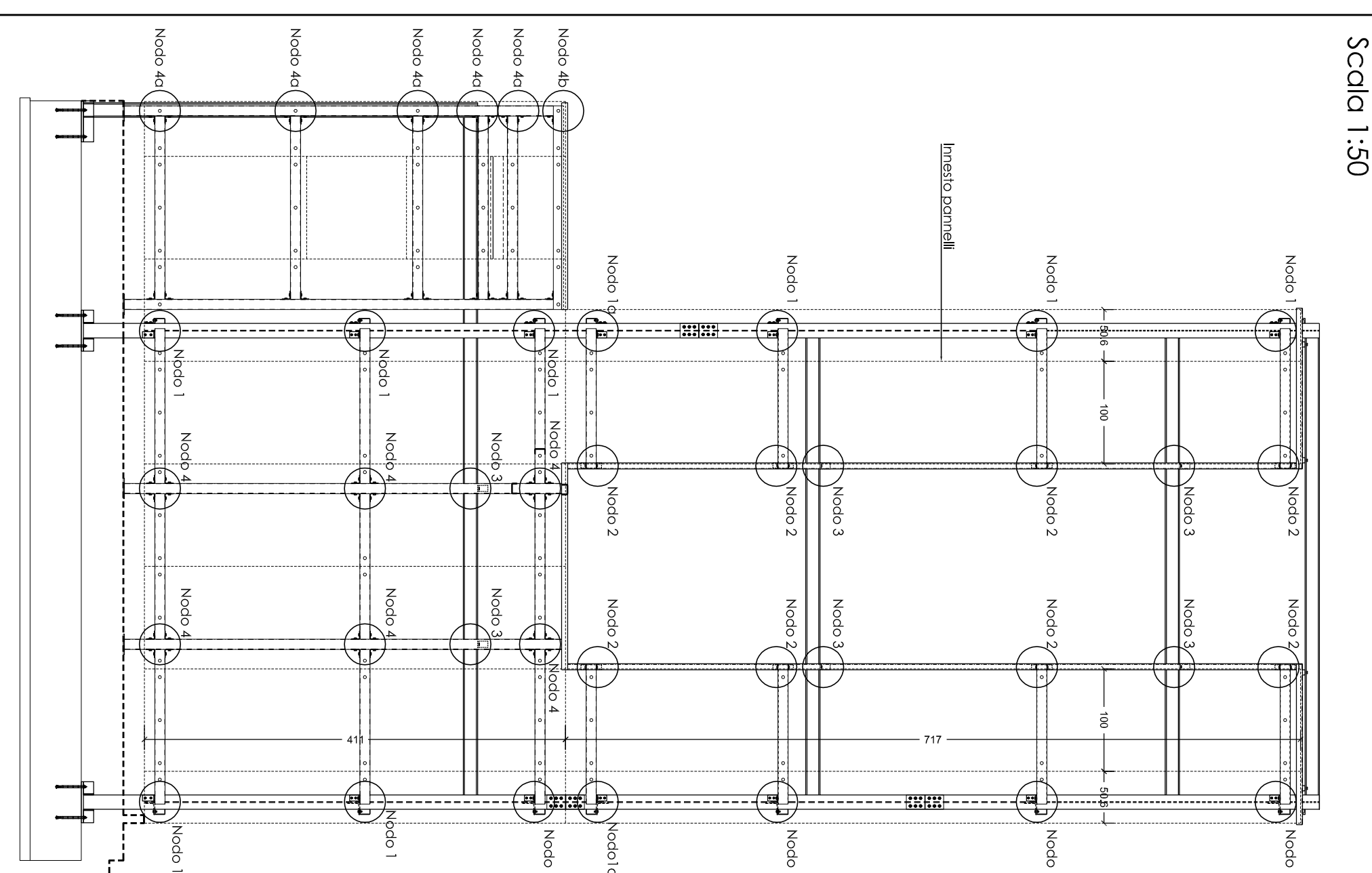
PROSPETTO NORD
Scala 1:50



PROSPETTO OVEST
Scala 1:50

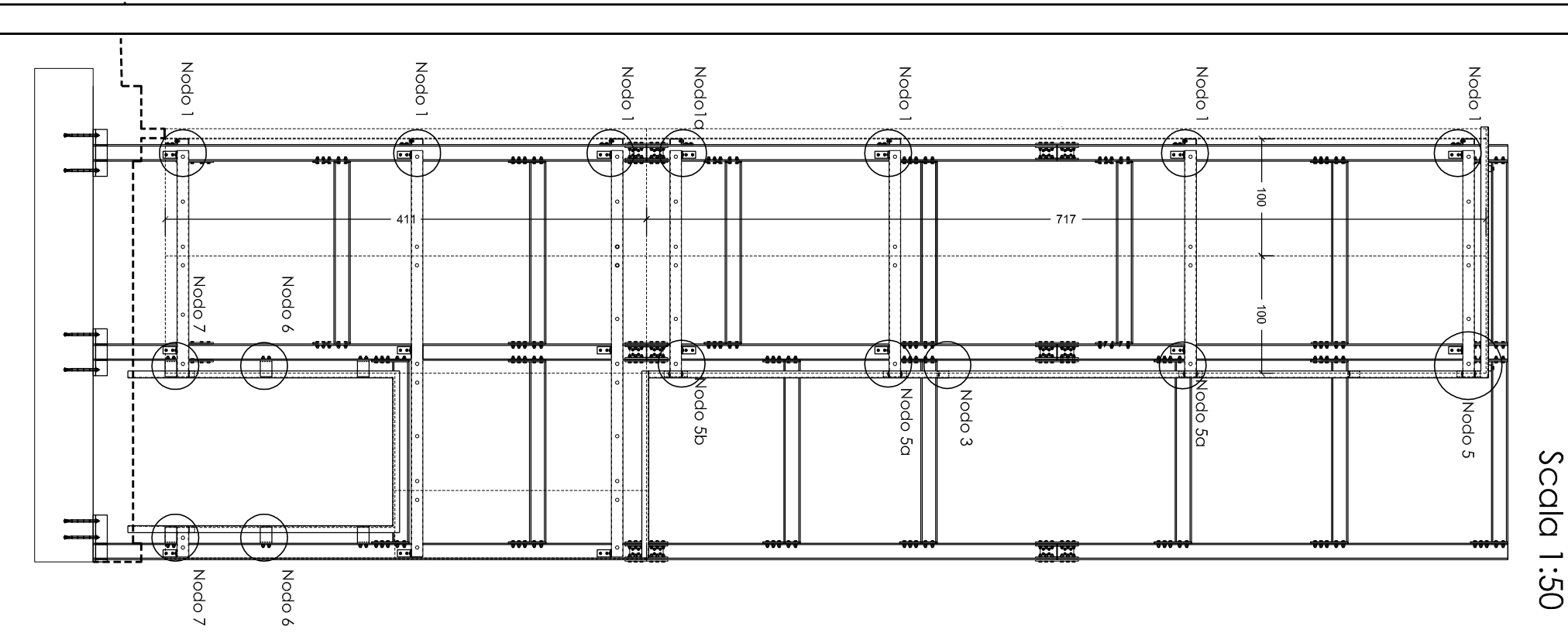


VISTA NORD
Scala 1:50



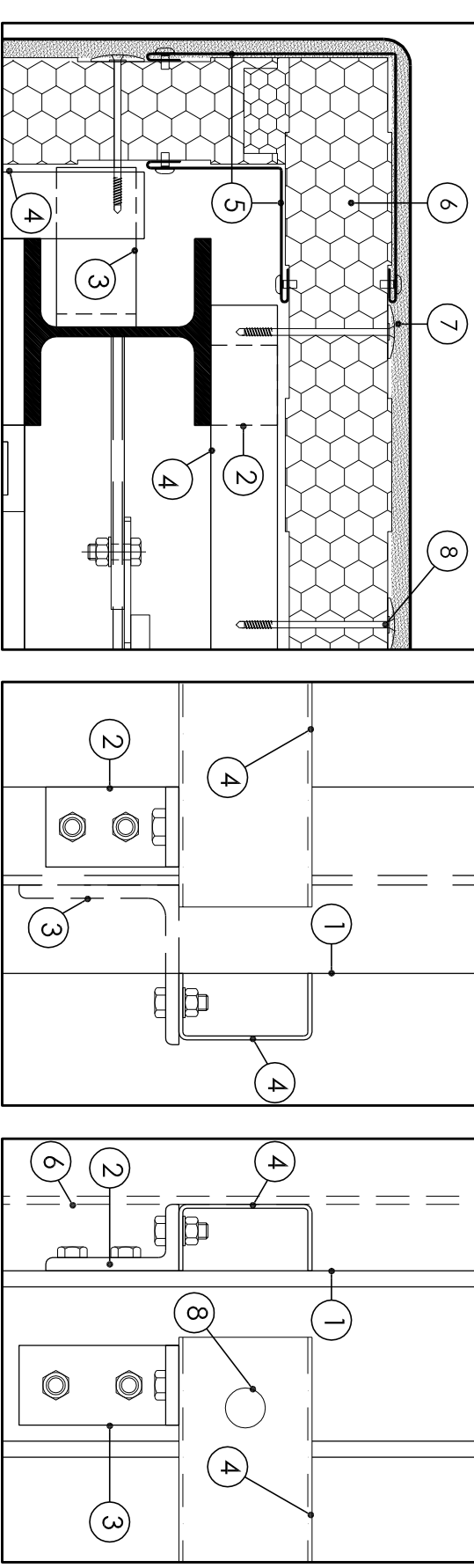
TELA ANCORAGGI SCHEMATURE

VISTA OVEST
Scala 1:50

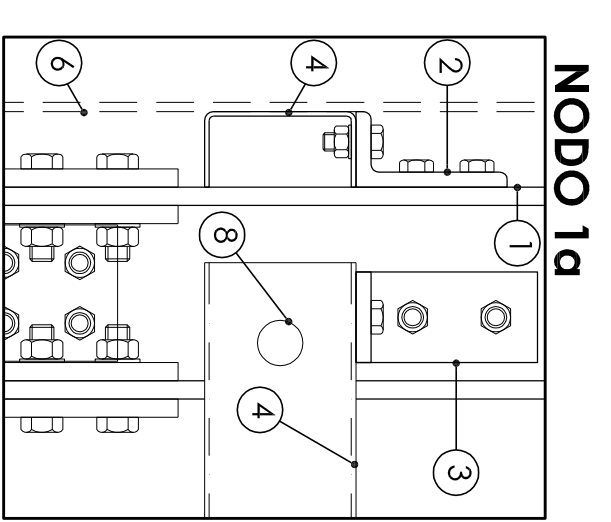


- ① Colonna HEB 140
- ② Profilo a L 100x50x10
- ③ Profilo a L 120x120x10
- ④ Profilo a C 50x100x50x3
- ⑤ Lemniero d'angolo
- ⑥ Pannello
- ⑦ Intonaco
- ⑧ Vite di fissaggio pannello
- ⑨ Profilo a L 50x50x3
- ⑩ Profilo a C 50 x 100 x 50 x 5
- ⑪ Profilo a L 180x100x10
- ⑫ Trave HEB 140
- ⑬ controvento Ø14
- ⑭ Profilo a L 80x80x3
- ⑮ Profilo a L 120x90x10
- ⑯ Profilo a L 140x140x10
- ⑰ Sciummo
- ⑱ Sigillante
- ⑲ Profilo cavi bordo
- ⑳ Scossalina
- ㉑ Plinto 40x10

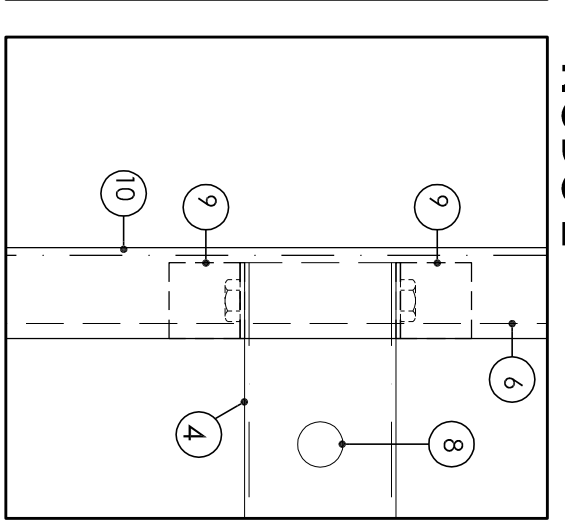
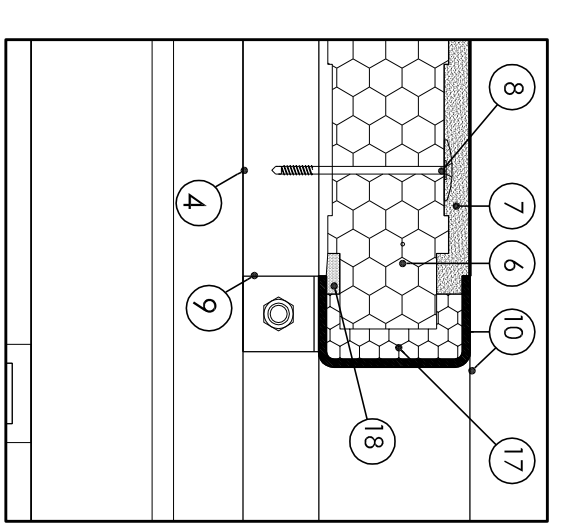
NODO 1



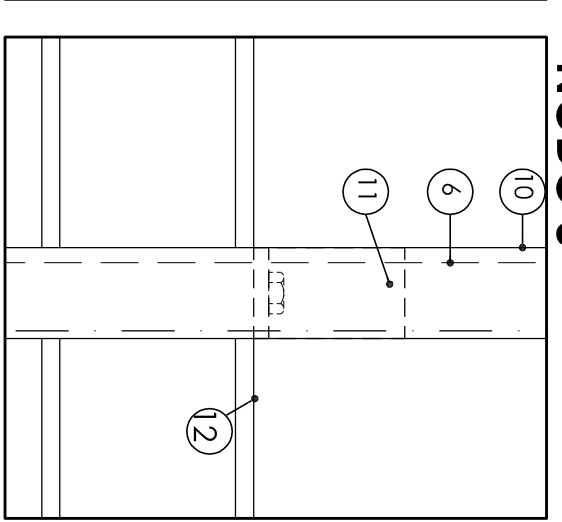
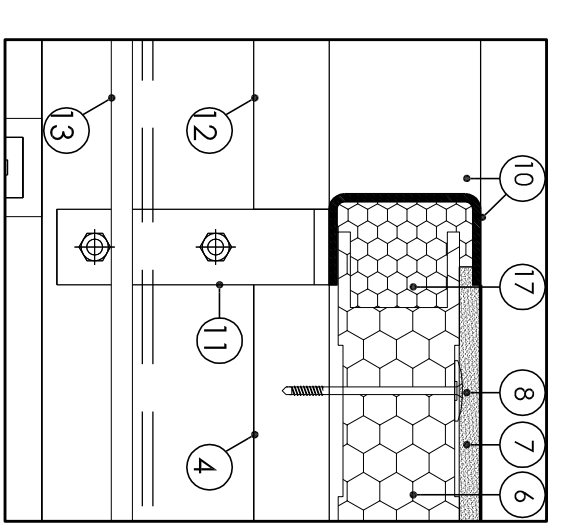
NODO 1a



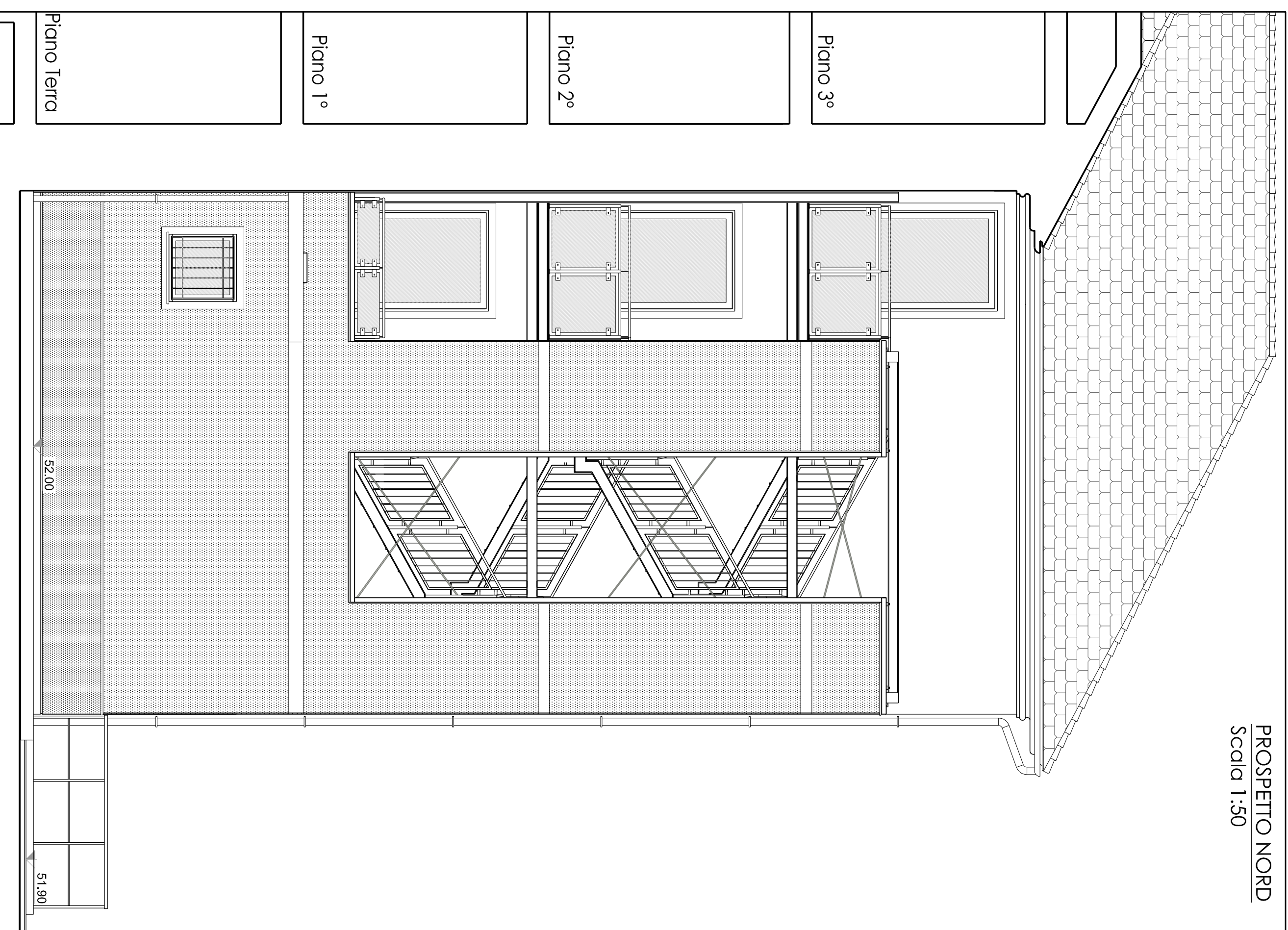
NODO 2



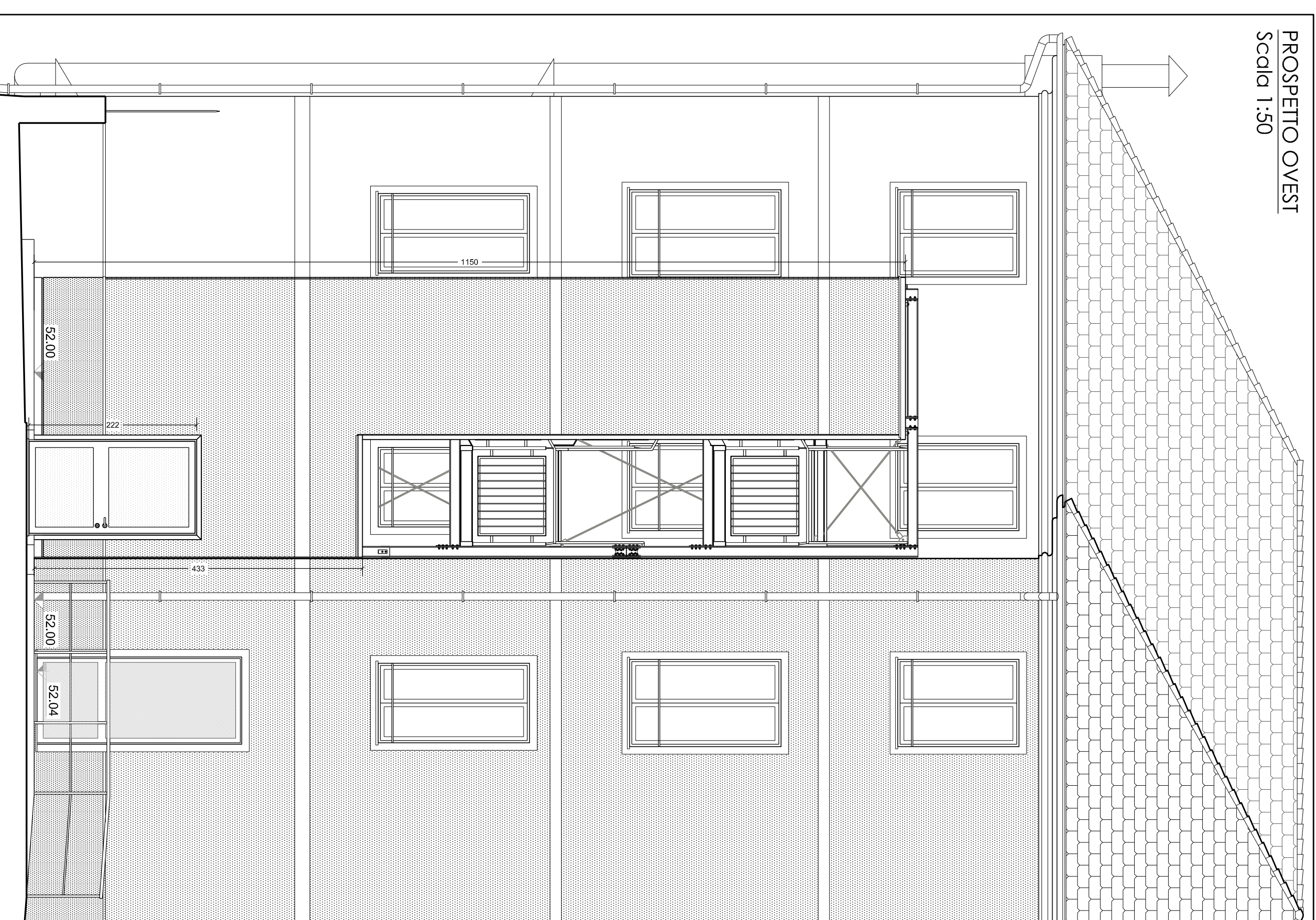
NODO 3



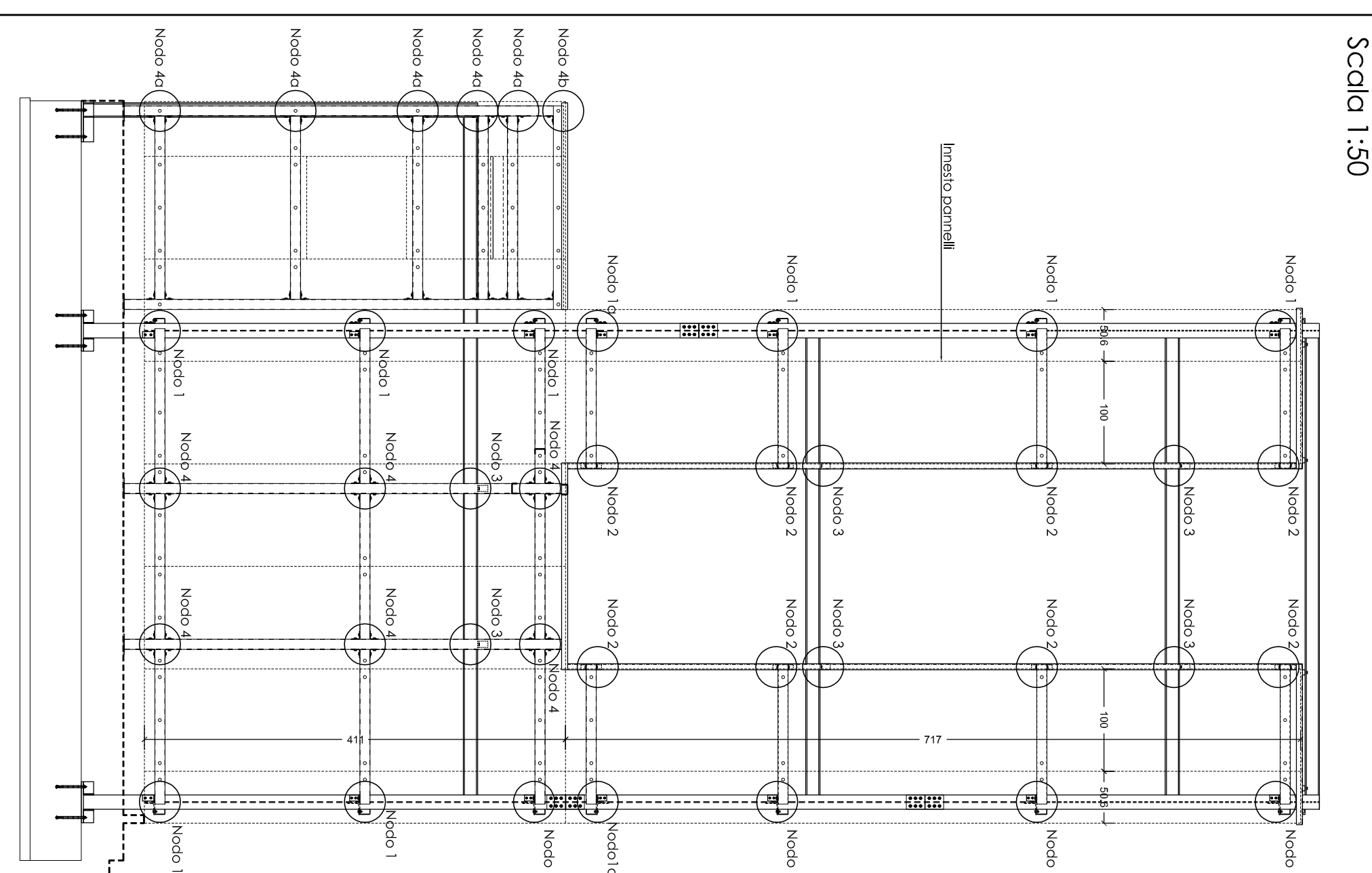
PROSPETTO NORD
Scala 1:50



PROSPETTO OVEST
Scala 1:50

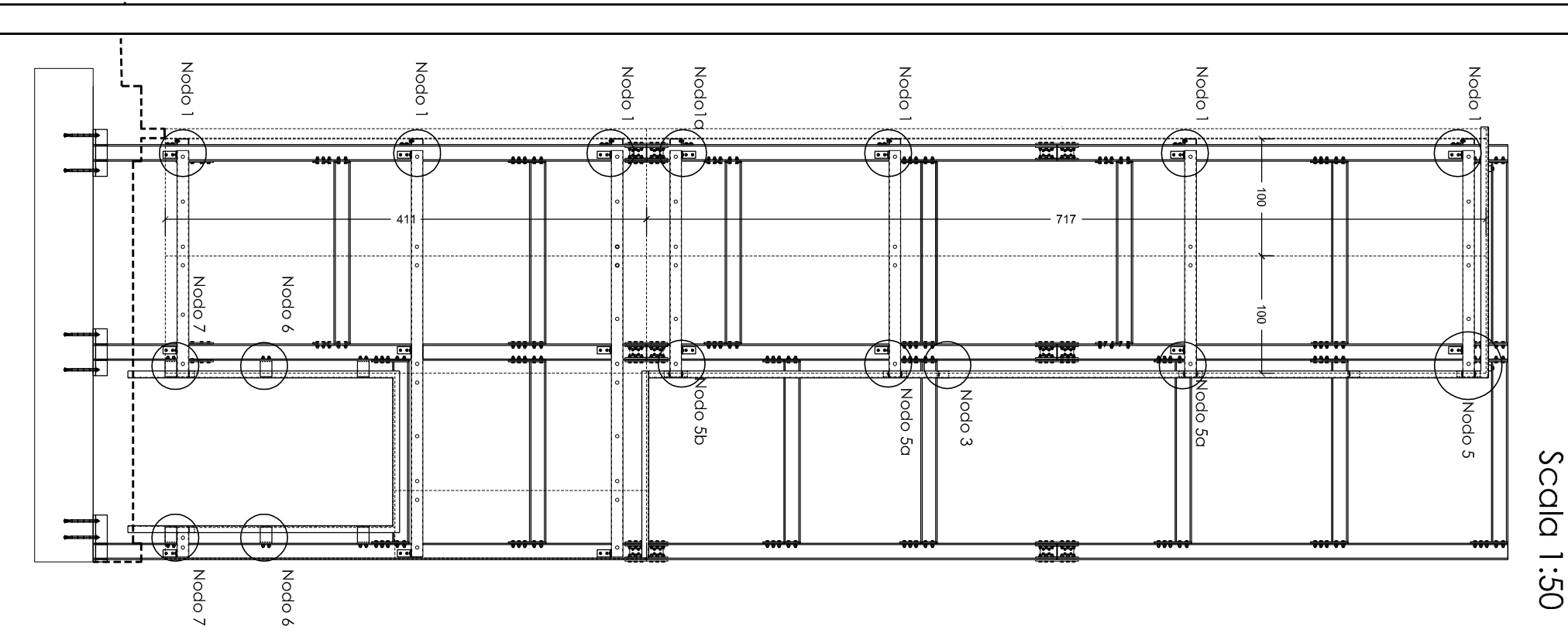


VISTA NORD
Scala 1:50



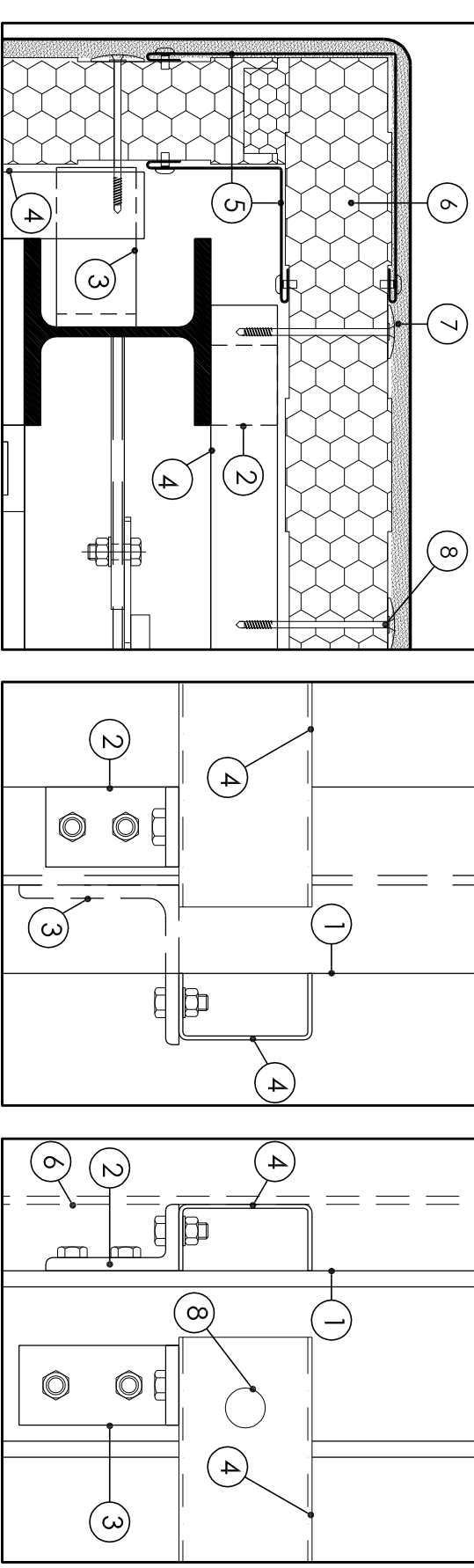
TELA ANCORAGGI SCHEMATURE

VISTA OVEST
Scala 1:50

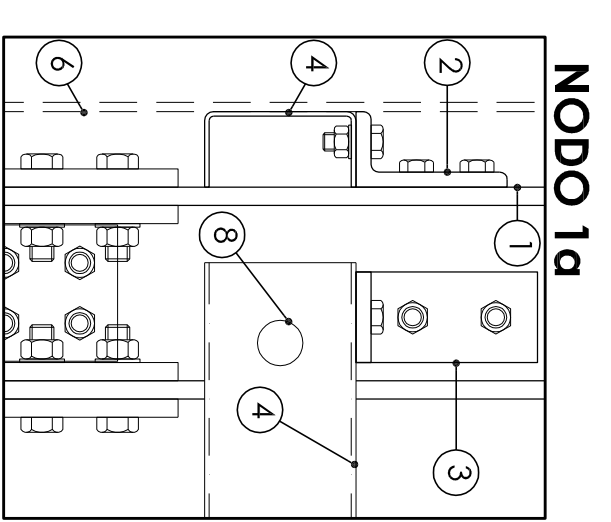


- ① Colonna HEB 140
- ② Profilo a L 100x50x10
- ③ Profilo a L 120x120x10
- ④ Profilo a C 50x100x50x3
- ⑤ Lemniero d'angolo
- ⑥ Pannello
- ⑦ Intonaco
- ⑧ Vite di fissaggio pannello
- ⑨ Profilo a L 50x50x3
- ⑩ Profilo a C 50 x 100 x 50 x 5
- ⑪ Profilo a L 180x100x10
- ⑫ Trave HEB 140
- ⑬ controvento Ø14
- ⑭ Profilo a L 80x80x3
- ⑮ Profilo a L 120x90x10
- ⑯ Profilo a L 140x140x10
- ⑰ Sciummo
- ⑱ Sigillante
- ⑲ Profilo cavi bordo
- ⑳ Scossalina
- ㉑ Plinto 40x10

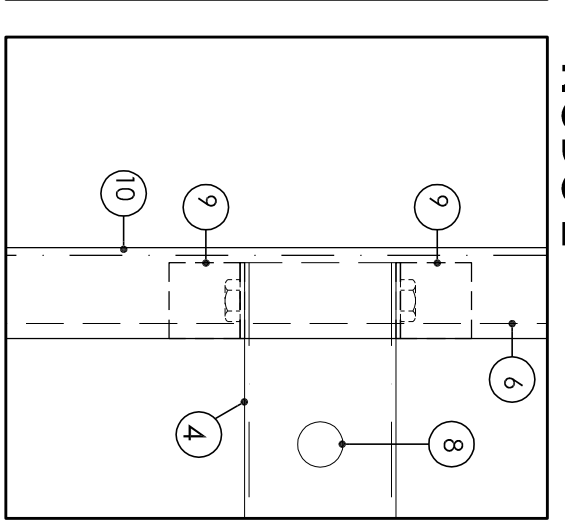
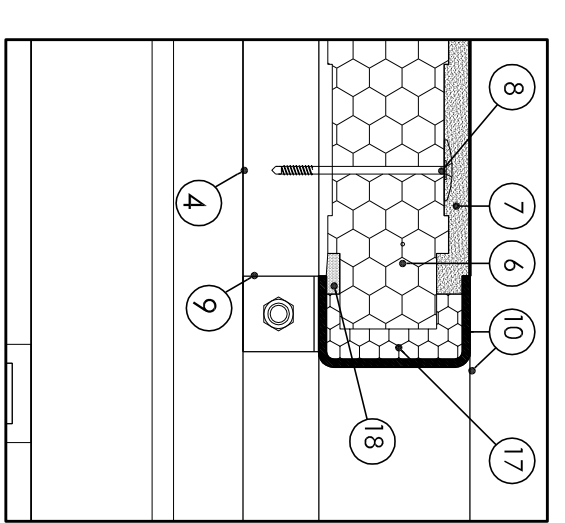
NODO 1



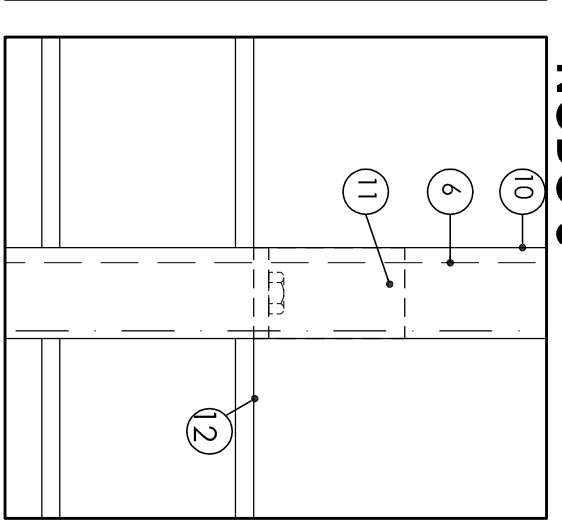
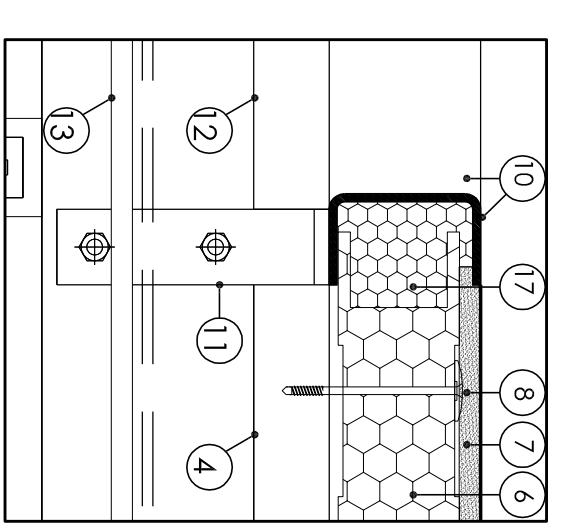
NODO 1a



NODO 2



NODO 3



COMUNE DI GENOVA

DIREZIONE PATRIMONIO, DEMANIO E IMPIANTISTICA SPORTIVA

UFFICIO SPECIALISTICO - PREVENZIONE INCENDI

CAPO PROGETTO Arch. Antonino GENNARO

RESPONSABILE DEL PROCEDIMENTO Arch. Mario RIZZI

Progetto ARCHITETTONICO Arch. Antonio GENNARO

Collaboratori: Ing. Laura BABERER

Progetto COMPUTI E STILE (Geom. Pietro MARCENARO

PREVENZIONE INCENDI Arch. Antonio GENNARO

Collaboratori: Arch. Silvia GUERRA

Progetto STRUTTURALE Ing. Daniele MARO

Progetto IMPIANTI

Invenire Opera

ADeguAMENTO ALLA NORMATIVA ANTINCENDIO DELL'EDIFICIO SCOLASTICO DI VIA BOTTINI, 43 (VILLA GIUSTINIANI)

SEDE DELLE SCUOLE MATERNA "VIA BOTTINI 43" ED ELEMENTARE "GIUSTINIANI"

Opera della Tavola DETTAGLIO SCALA ESTERNA E OPERE LIMITROFE

Prospetto Nord (1:50)

Prospetto Ovest (1:50)

Particolari costruttivi (1:5)

Direttore Arch. Roberto TEBESCHI

Responsabile Ing. Silvio CAMILLI

Collaboratore Arch. Mario RIZZI

Collaboratore Arch. Antonio GENNARO

Collaboratore Arch. Silvia GUERRA

Collaboratore Ing. Daniele MARO

Collaboratore

Collaboratore

Collaboratore

Collaboratore

Collaboratore

Collaboratore

Collaboratore

Collaboratore

Collaboratore

Collaboratore

Collaboratore

Collaboratore

Collaboratore