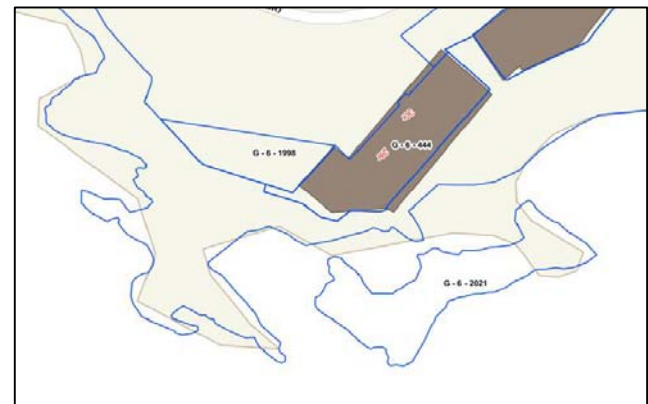
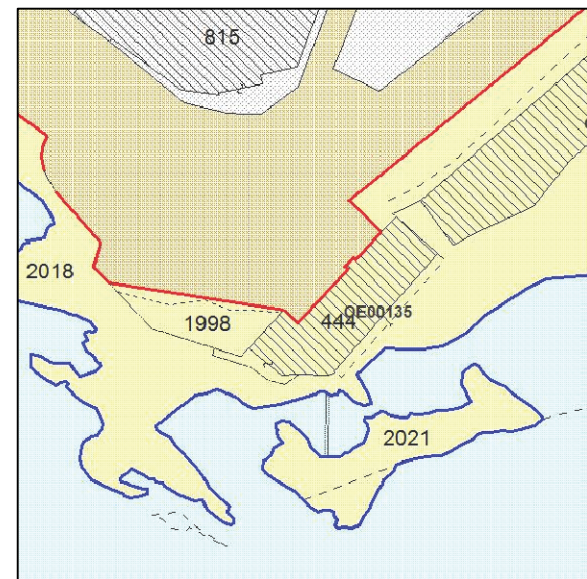
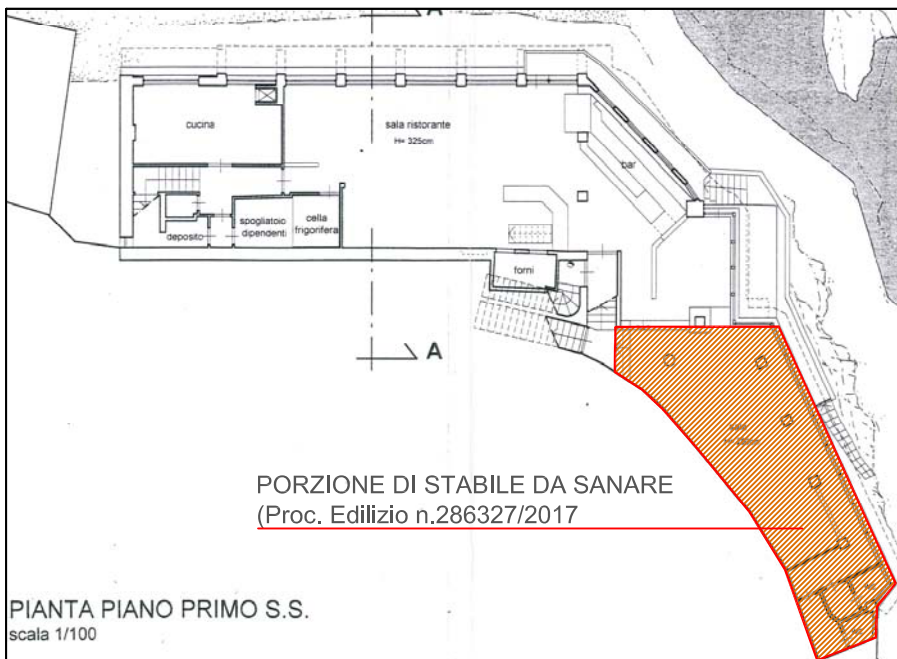




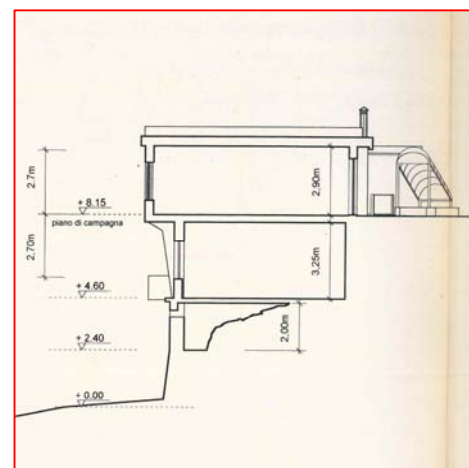
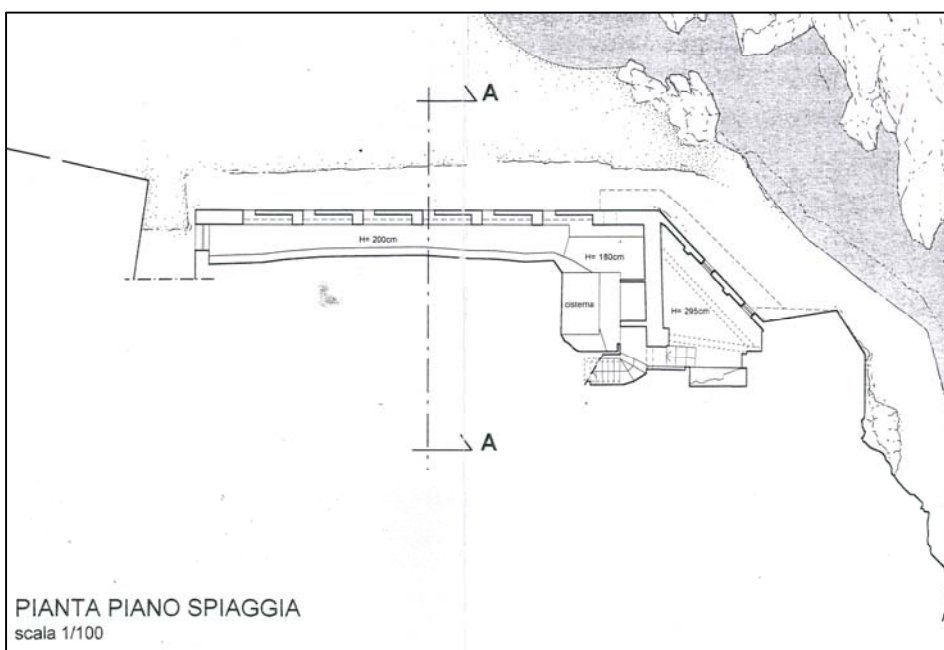
RIPRESA FOTOGRAFICA - Volo Regione Liguria anno 2010



STRALCIO CTC/catasto tratta dal GeoPortale



STRALCIO CARTOGRAFICO DEL SISTEMA INFORMATIVO DEL DEMANIO (S.I.D.) Catasto Terreni: fg. 6 - Seg. G - mapp. 444, 1998



SEZIONE TRASVERSALE SCHEMATICA